

만성질환 통계

익수사고 발생현황, 2015~2019년

1 성·연령별 발생 현황

응급실손상환자심층조사(23개 참여병원에서 실시)에 의하면 2015년부터 2019년까지 불의의 익수사고로 인해 응급실에 내원한 환자 수는 848명이었으며, 남자가 598명(70.5%), 여자가 250명(29.5%) 이었음(그림 1). 연령별로는 9세 이하에서 발생 빈도가 가장 높았고(전체 환자의 28.9%), 50대 이후 증가. 익수사고 환자 중 17.5%가 사망하며, 70세 이상 사망분율이 35.9%로 가장 높음.

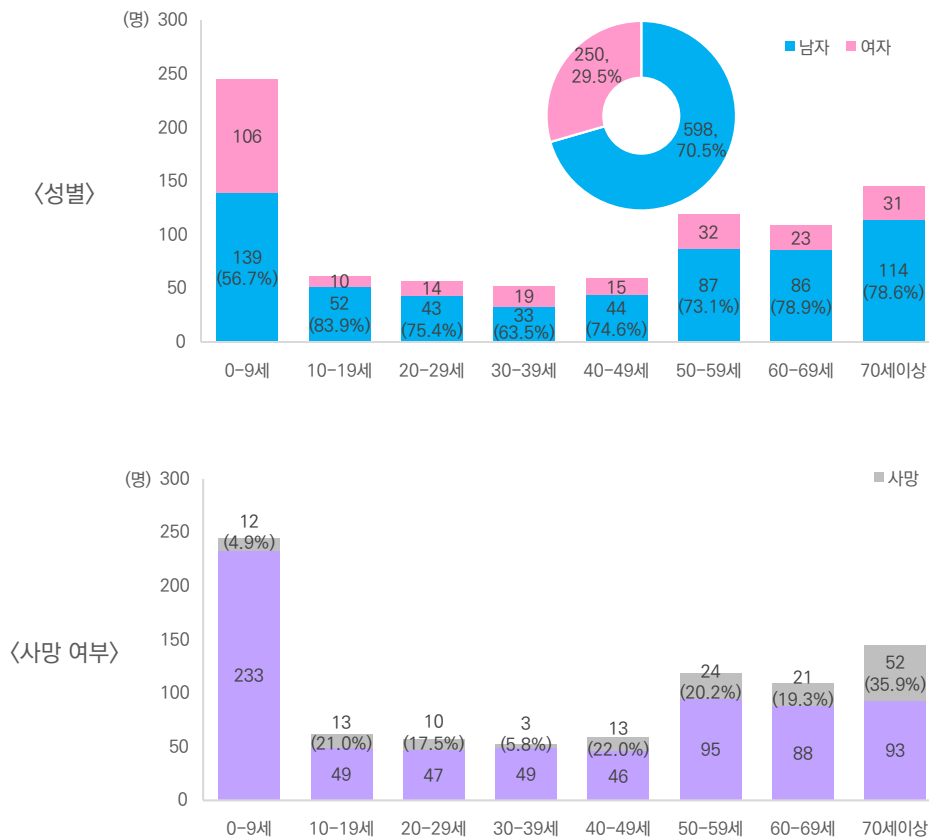


그림 1. 연령별 익수사고로 인한 응급실 내원 환자 수(2015~2019년 자료 통합분석)

* 자료원 : 응급실손상환자심층조사 2015~2019년

* 분석대상 : 불의의 사고로 인한 익수사고만 포함, 자해·자살·폭력·타살 등 제외

* 자료이용 시 주의 : 응급실손상환자심층조사는 23개의 참여병원에서만 수행 중이므로 제시된 값이 우리나라 전체 익수사고 발생건수를 반영하는 것은 아님

2 발생 시기 및 장소

익수사고는 바다, 강을 포함한 야외에서 발생한 경우가 54.7%로 가장 많았고, 7, 8월에 많이 발생.

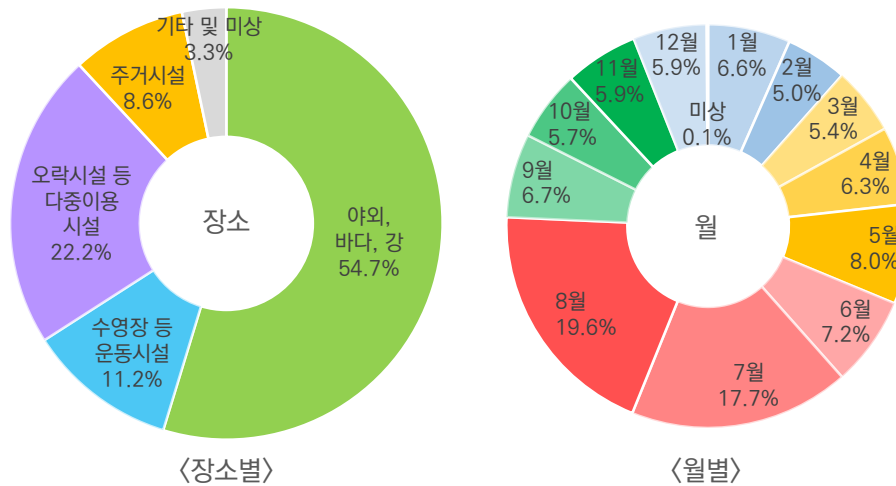


그림 2. 익수사고 발생 장소 및 시기(2015~2019년 자료 통합분석)

* 자료원 : 응급실손상환자심층조사 2015~2019년

* 분석대상 : 불의의 사고로 인한 익수사고만 포함, 자해 · 자살 · 폭력 · 타살 등 제외

* 자료이용 시 주의 : 응급실손상환자심층조사는 23개의 참여병원에서만 수행 중이므로 제시된 값이 우리나라 전체 익수사고 발생건수를 반영하는 것은 아님

[참고] 응급실손상환자심층조사

- 2006년에 도입하여 2021년 현재 23개 병원에서 응급실 내원 손상환자 대상 조사 실시
- 손상 발생 기전, 사고 시 활동·장소, 치료 내용 및 결과 등을 조사하여 손상예방관리 방안 개발에 필요한 통계 제공

작성부서 : 질병관리청 건강위해대응관 손상예방관리과

Noncommunicable Disease (NCD) Statistics

Occurrence of drowning accident

1 Occurrence of drowning accident by sex and age group

From 2015 to 2019, the number of patients who visited the emergency room of 23 participating hospitals that joined the Emergency Department In-depth Injury Survey due to drowning accident was 848, with 598 men, and 250 women (Figure 1). By age group, the occurrence of children under the age of 9 was more frequent (28.9% of total cases). The proportion of death was 17.5%, and that of group of 70 years old and over was 35.9%.

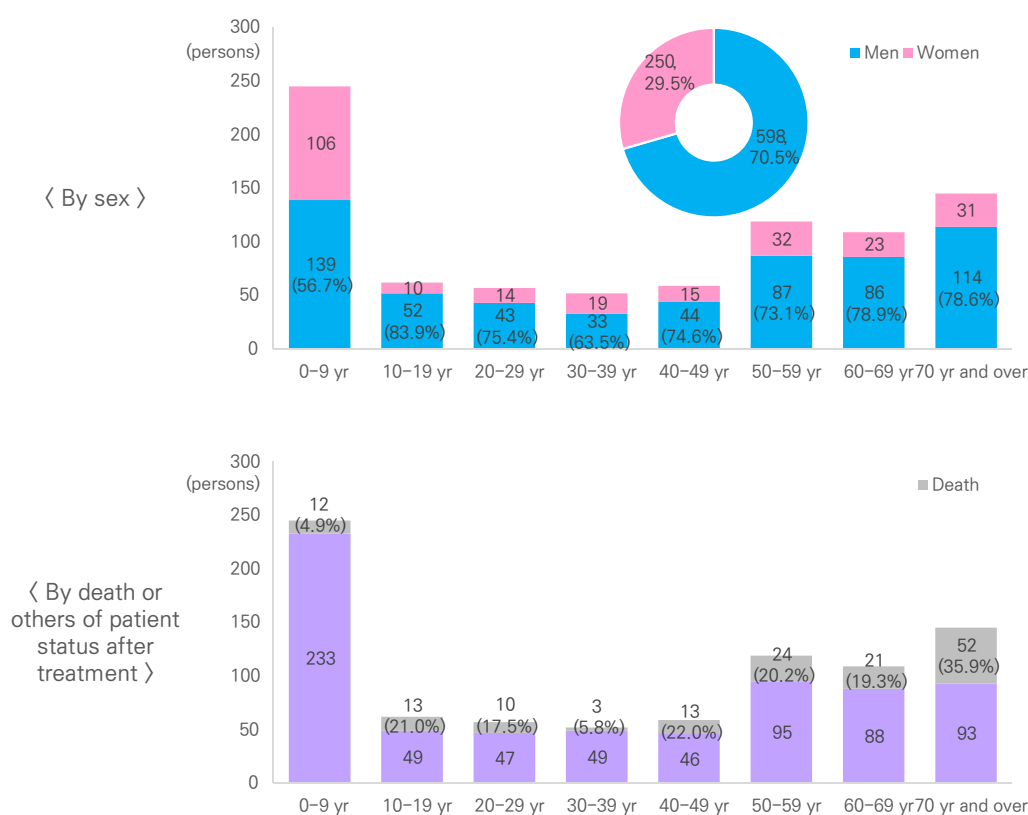


Figure 1. Occurrences of drowning accident by age group in Emergency Department In-depth Injury Survey, 2015–2019

* Source: Emergency Department In-depth Injury Survey, from 2015 to 2019

* Subjects: Patients induced by drowning accident excepted self harm, suicide, violence, homicide, etc.

* Attention: Emergency Department In-depth Injury Survey has been conducted in the emergency departments of 23 institutions, of which data could not represent the nation-wide occurrences.

2 Occurrence of drowning accident by place and time

The drowning accident occurred mainly in outdoor including seas, rivers, etc (54.7%), while the cases were highly occurred in July and August (Figure 2).

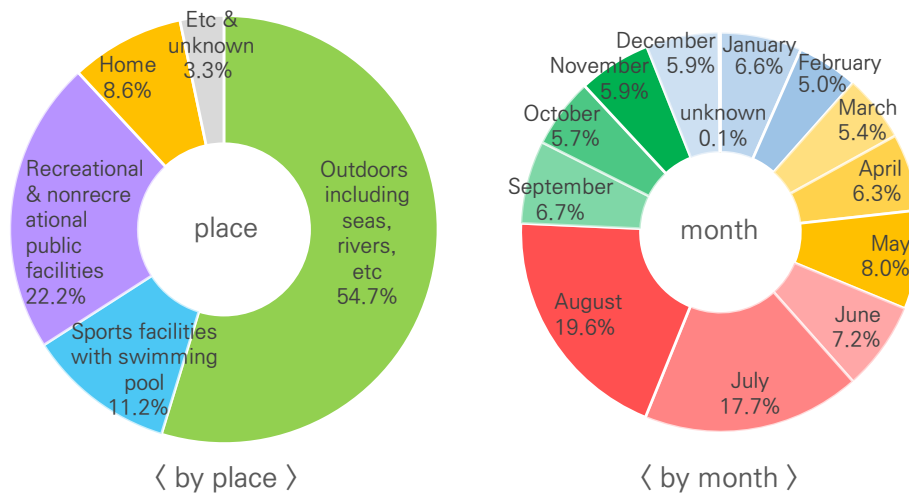


Figure 2. Occurrences of drowning accident by place and month in Emergency Department In-depth Injury Survey, 2015–2019

* Source: Emergency Department In-depth Injury Survey, from 2015 to 2019

* Subjects: Patients induced by drowning accident excepted self harm, suicide, violence, homicide, etc.

* Attention: Emergency Department In-depth Injury Survey has been conducted in the emergency departments of 23 institutions, of which data could not represent the nation-wide occurrences.

[Reference] Emergency Department In-depth Injury Survey (EDIIS)

- EDIIS was introduced for 5 hospitals in 2006, which has been conducted in the emergency departments of 23 institutions from 2015.
- In order to provide the evidence for supporting injury prevention and control, EDIIS has produced the statistics such as injury occurrence mechanism, general characteristics of accidents, status of patients, and so on.

Reported by: Division of Injury Prevention and Control, Korea Disease Control and Prevention Agency