

Abstract

Weekly report on the COVID-19 situation in the Republic of Korea (As of August 8, 2020)

Hwang Insob, Kim Younghwa, Yeom Hansol, Park Kwangsuk, Kwon Jaewoo, Kim Miyoung, Park Young Joon, Gwack Jin, Park Ok
Central Disease Control Headquarters, Epidemiology and Case management team

This is a weekly report on the COVID-19 situation in the Republic of Korea based on the confirmed cases reported through the Integrated System to Korea Centers for Disease Control and Prevention according to the INFECTIOUS DISEASE CONTROL AND PREVENTION ACT and based on the epidemiological investigation by central and local health authorities.

As of August 8, 2020, there were 14,610 confirmed cases of COVID-19, and including 305 deaths. Confirmed cases were reported in all 17 provinces/cities in Korea, with the highest number of cases from Daegu, Seoul, Gyeonggi and Gyeongbuk. The results indicated that, by gender, women accounted for a slightly higher proportion (54.4%) of total confirmed cases than men. And, by age the median age was 44 years old (range: 0 to 104 years old).

The main infectious paths confirmed by epidemiological investigations showed several major clusters related to COVID-19. Of the total cases, the proportion of imported cases was 17.5%; 35.7% were Shincheonji (and related); 38.2% are small clusters and contacts of confirmed cases (other than Shincheonji); and 8.6% are currently under investigation as per infection route surveys.

Keywords: 2019 Novel Coronavirus (2019-nCoV), Coronavirus Disease-19 (COVID-19), Outbreaks, Epidemiological monitoring

Table 1. The number of confirmed/deceased cases and incidence rate by region

Region*	Confirmed cases			Deaths		
	Newly cases in 32 nd week (of 2020, 8.2.–8.8.)	Total (–8.8.)		32 nd week	Total	
	n (%)	n (%)	Incidence rate (n, per 0.1M population)	n	n	Fatality rate (%)
Seoul	72 (30.0)	1,680 (11.5)	17.3	2	13	0.8
Busan	4 (1.7)	177 (1.2)	5.2	–	3	1.7
Daegu	3 (1.3)	6,945 (47.5)	285.0	–	191	2.8
Incheon	5 (2.1)	389 (2.7)	13.2	1	3	0.8
Gwangju	5 (2.1)	210 (1.4)	14.4	–	2	1.0
Daejeon	–	166 (1.1)	11.3	–	2	1.2
Ulsan	1 (0.4)	60 (0.4)	5.2	–	1	1.7
Sejong	–	50 (0.3)	14.6	–	–	–
Gyeonggi	74 (30.8)	1,631 (11.2)	12.3	1	32	2.0
Gangwon	3 (1.3)	77 (0.5)	5.0	–	3	3.9
Chungbuk	8 (3.3)	82 (0.6)	5.1	–	–	–
Chungnam	3 (1.3)	193 (1.3)	9.1	–	1	0.5
Jeonbuk	–	39 (0.3)	2.1	–	–	–
Jeonnam	4 (1.7)	42 (0.3)	2.3	–	–	–
Gyeongbuk	8 (3.3)	1,411 (9.7)	53.0	–	54	3.8
Gyeongnam	6 (2.5)	166 (1.1)	4.9	–	–	–
JeJu	–	26 (0.2)	3.9	–	–	–
Airport Screening**	44 (18.3)	1,266 (8.7)	–	–	–	–
Total	240 (100.0)	14,610 (100.0)	28.2	4	305	2.1

* The rate of the number of confirmed cases reported by healthcare institutions in the area per 100,000 residents based on the number of residents registered by the Ministry of Interior and Safety

** Cases reported during the quarantine process in Incheon Airport and the Gimhae National Quarantine Station, etc.

Table 2. The number of confirmed/deceased cases and incidence rate by gender/age group

	Confirmed cases			Deaths		
	Newly cases in 32 nd week (of 2020, 8.2.–8.8.)	Total (–8.8)		32 nd week	Total	Fatality rate (%)
	n (%)	n (%)	Incidence rate (n, per 0.1M population)	n	n	
Total	240 (100.0)	14,610 (100.0)	27.3	4	305 (100.0)	2.1
Gender						
Male	153 (63.8)	6,664 (45.6)	24.6	2	162 (53.1)	2.4
Female	87 (36.3)	7,946 (54.4)	30.0	2	143 (46.9)	1.8
Age group(yrs)						
≤9	11 (4.6)	261 (1.8)	5.8	–	–	–
10–19	21 (8.8)	803 (5.5)	15.8	–	–	–
20–29	45 (18.8)	3,671 (25.1)	52.9	–	–	–
30–39	28 (11.7)	1,855 (12.7)	25.1	–	2 (0.7)	0.1
40–49	28 (11.7)	1,973 (13.5)	22.6	1	4 (1.3)	0.2
50–59	44 (18.3)	2,575 (17.6)	28.9	–	16 (5.2)	0.6
60–69	52 (21.7)	1,912 (13.1)	28.9	–	41 (13.4)	2.1
70–79	7 (2.9)	957 (6.6)	26.0	–	90 (29.5)	9.4
≥80	4 (1.7)	603 (4.1)	31.4	3	152 (49.8)	25.2
Mean	42.7	43.9			77.8	
Median (min–max)	43.5 (1–92)	44 (0–104)			79 (35–98)	

Table 3. Regional distribution and epidemiological links of the confirmed cases

Region*	Total	Imported cases	Shincheonji cases (and related)	Small cluster/contacts of confirmed case	Under investigation
Seoul	1,680	358	8	1,135	179
Busan	177	42	12	102	21
Daegu	6,945	64	4,512	1,629	740
Incheon	389	81	2	292	14
Gwangju	210	28	9	168	5
Daejeon	166	19	2	127	18
Ulsan	60	26	16	16	2
Sejong	50	5	1	43	1
Gyeonggi	1,631	438	29	1,063	101
Gangwon	77	24	17	32	4
Chungbuk	82	19	6	44	13
Chungnam	193	32	–	151	10
Jeonbuk	39	21	1	16	1
Jeonnam	42	24	1	15	2
Gyeongbuk	1,411	37	566	678	130
Gyeongnam	166	55	32	66	13
JeJu	26	15	–	11	–
Airport Screening**	1,266	1,266	–	–	–
Total	14,610 (100.0%)	2,554 (17.5%)	5,214 (35.7%)	5,588 (38.2%)	1,254 (8.6%)

* Based on reported data of patients, etc. via the Integrated System in Korea Centers for Disease Control and Prevention by a healthcare institution. The table may be different from the statistics of the address of patients, etc. The data may change due to delays in report and/or new findings of epidemiological investigation

** Cases reported during the quarantine process in Incheon Airport and the Gimhae National Quarantine Station, etc.

Table 4. Epidemiological links of confirmed cases by week

	-25wk (1.1.-6.20.)	26wk (6.21.-6.27.)	27wk (6.28.-7.4.)	28wk (7.5.-7.11.)	29wk (7.12.-7.18.)	30wk (7.19.-7.25.)	31wk (7.26.-8.1.)	32wk (8.2.-8.8.)
Cumulative cases	12,439	12,735	13,109	13,442	13,757	14,160	14,370	14,610
Imported	1,440	1,557	1,670	1,844	2,053	2,295	2,443	2,554
Small cluster/contacts of confirmed case	10,999	11,178	11,439	11,598	11,704	11,865	11,927	12,056
Newly cases	12,439	296	374	333	315	403	210	240
Imported	1,440	117	113	174	209	242	148	111
Small cluster/contacts of confirmed case	10,999	179	261	159	106	161	62	129

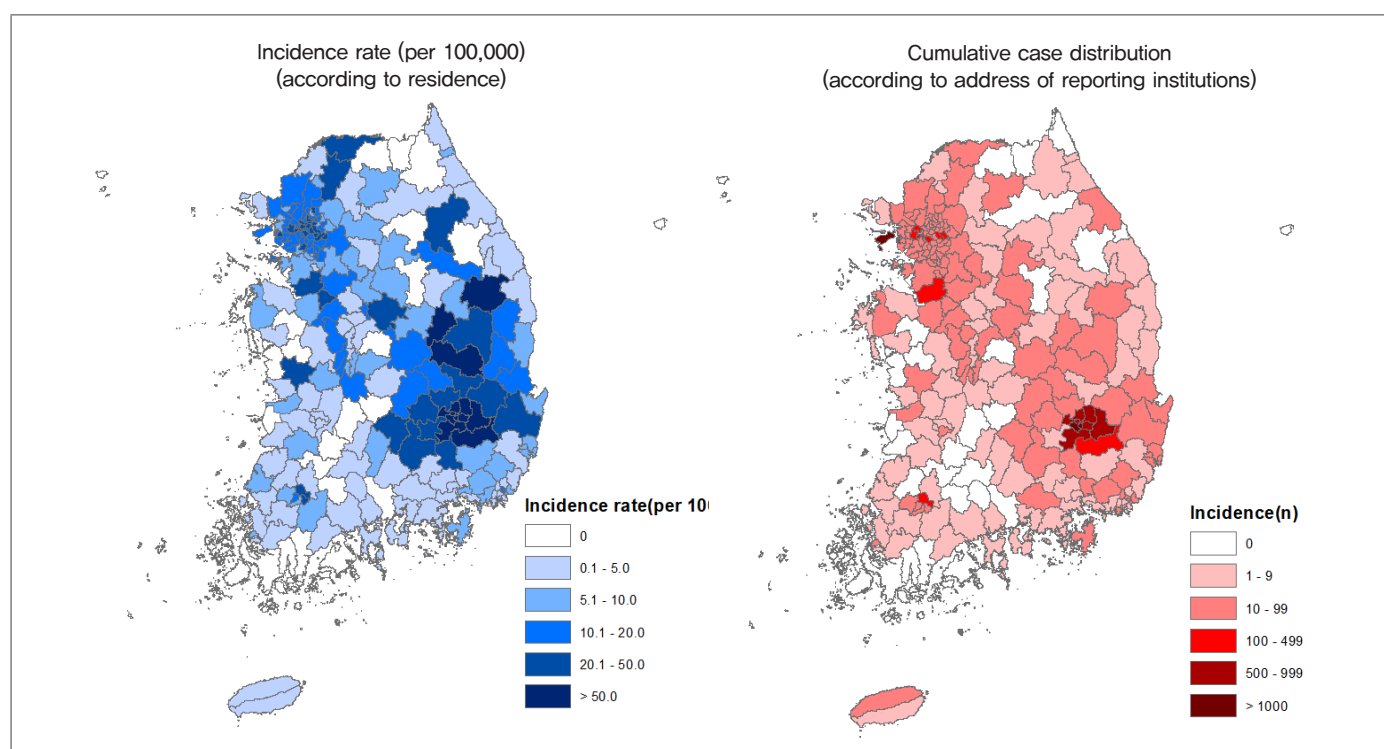


Figure 1. Confirmed cases distribution by region (city, county, district)

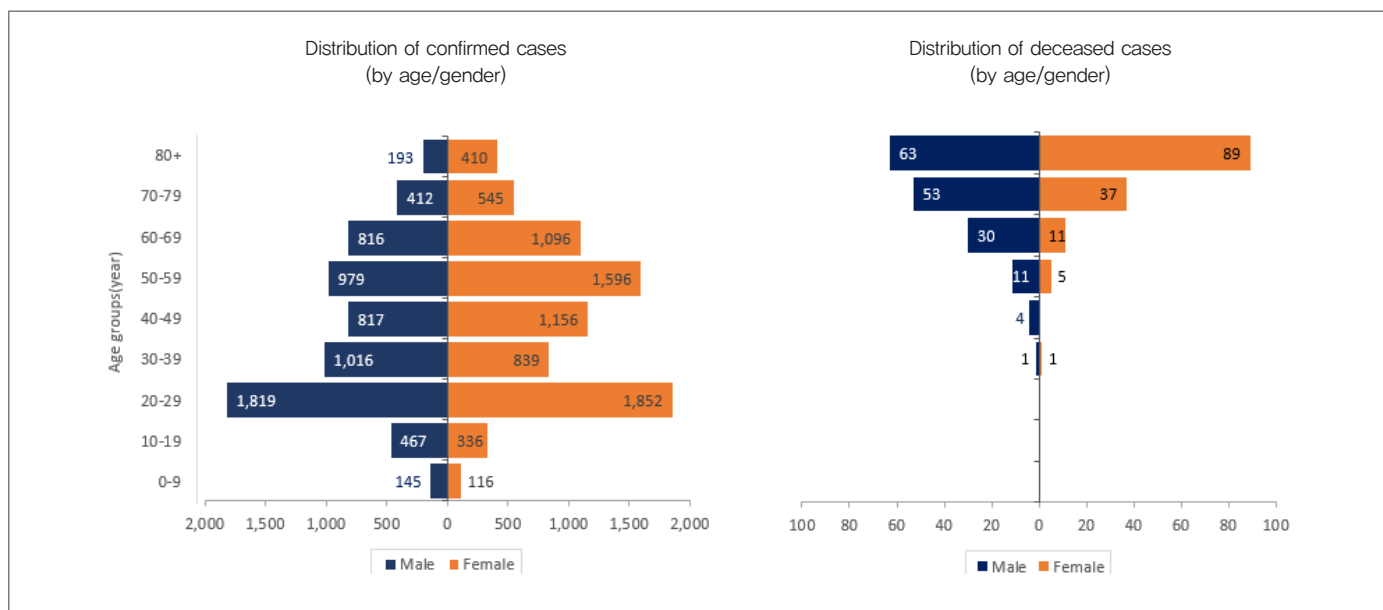


Figure 2. The distribution of confirmed/deceased cases by gender/age group

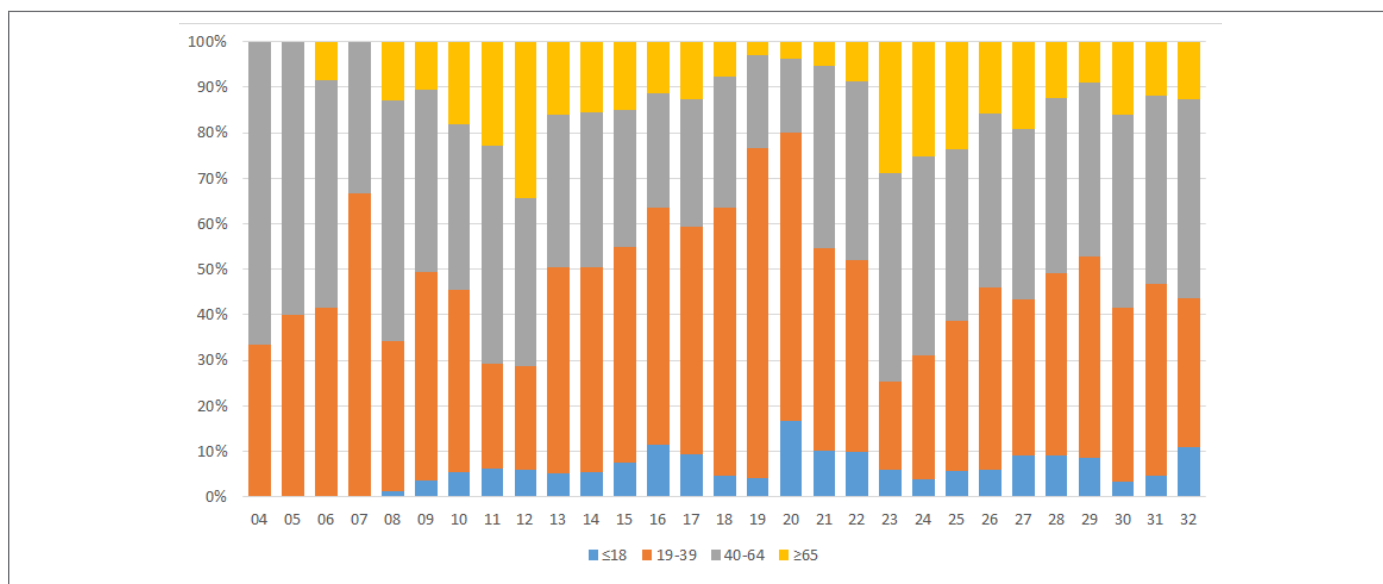
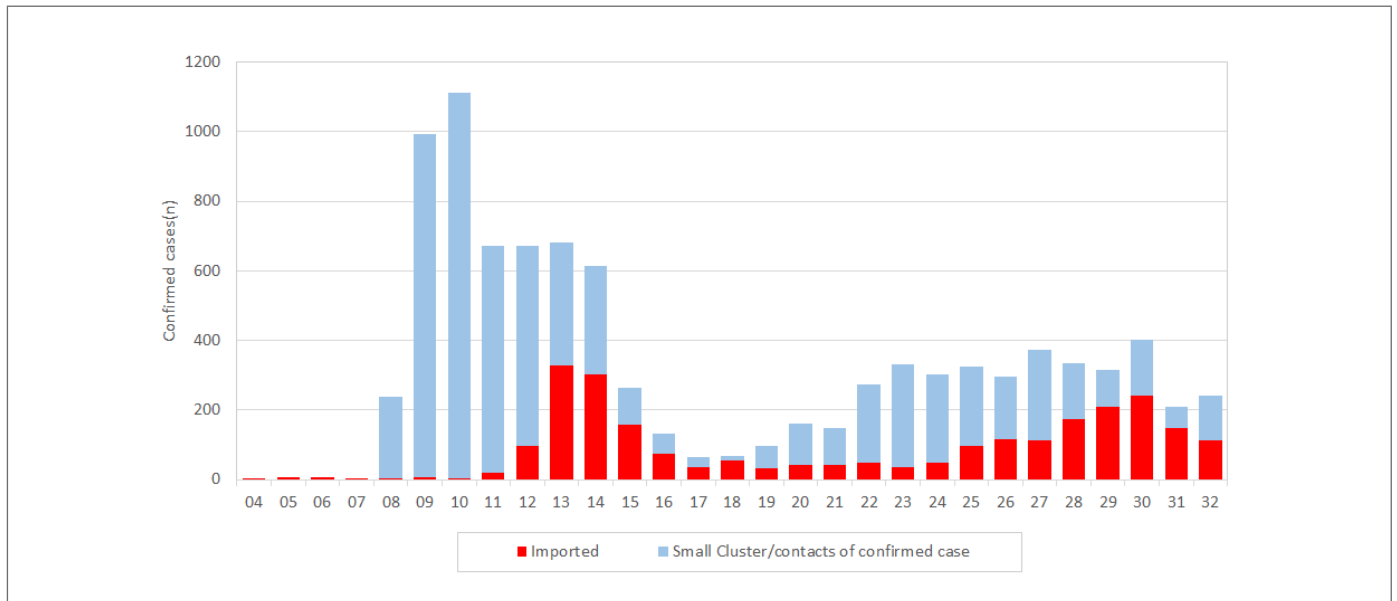


Figure 3. Weekly trend of age group proportion of confirmed cases



*not included Shincheonji (and related)

Figure 4. Weekly trend of epidemiological links

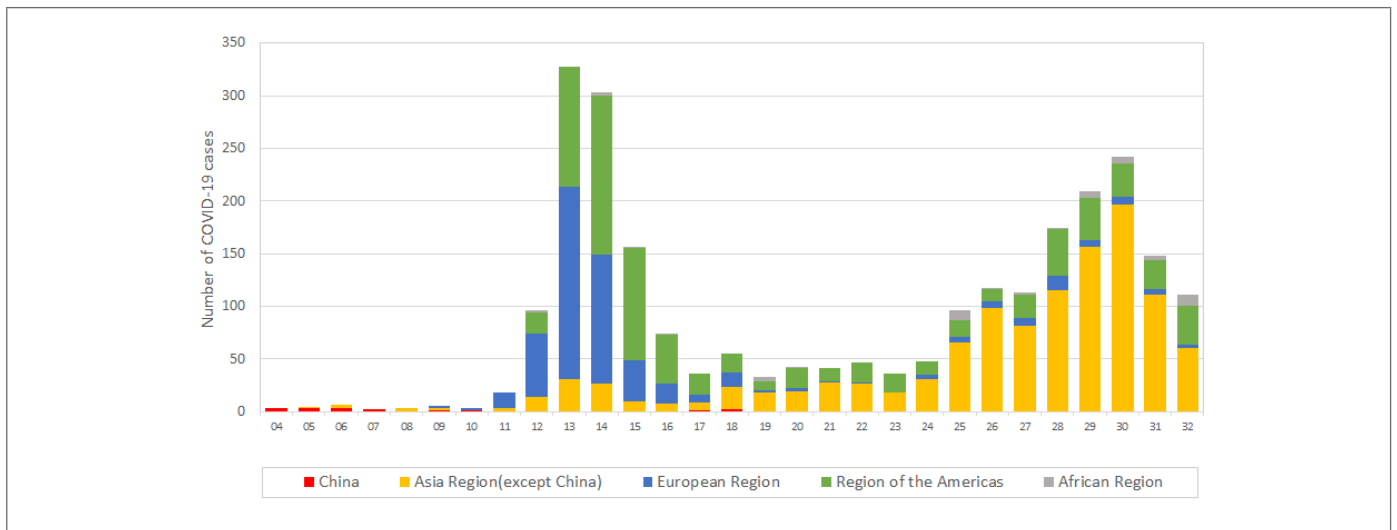


Figure 5. Weekly trend of imported cases

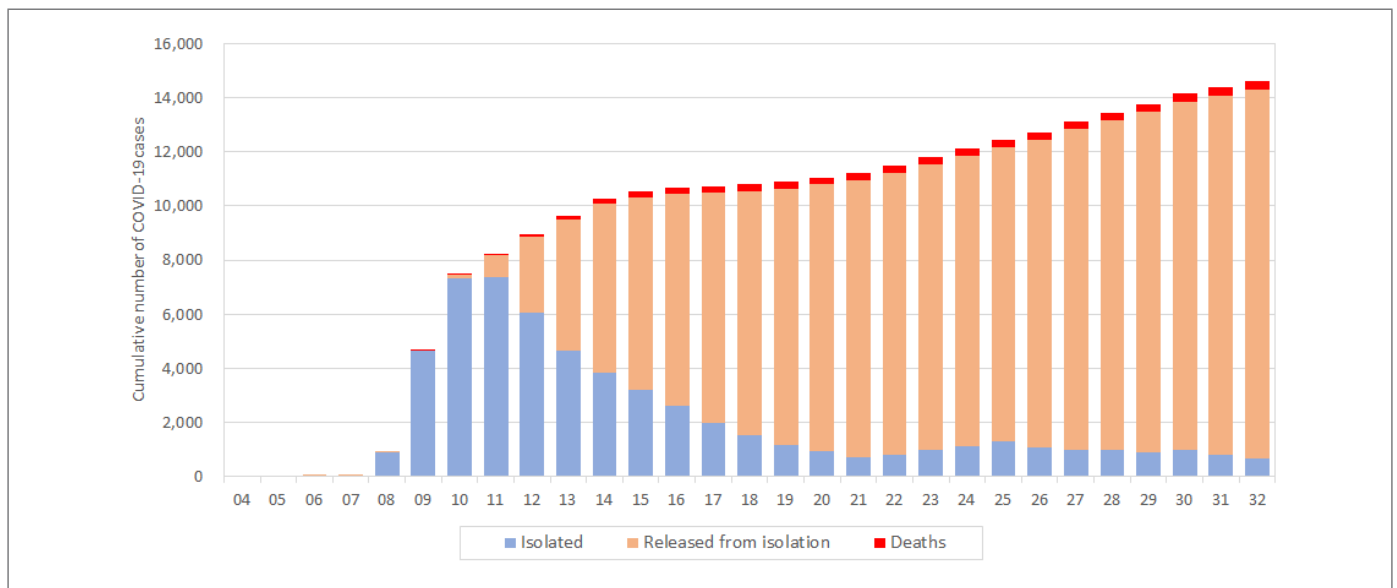


Figure 6. Total confirmed cases and case status

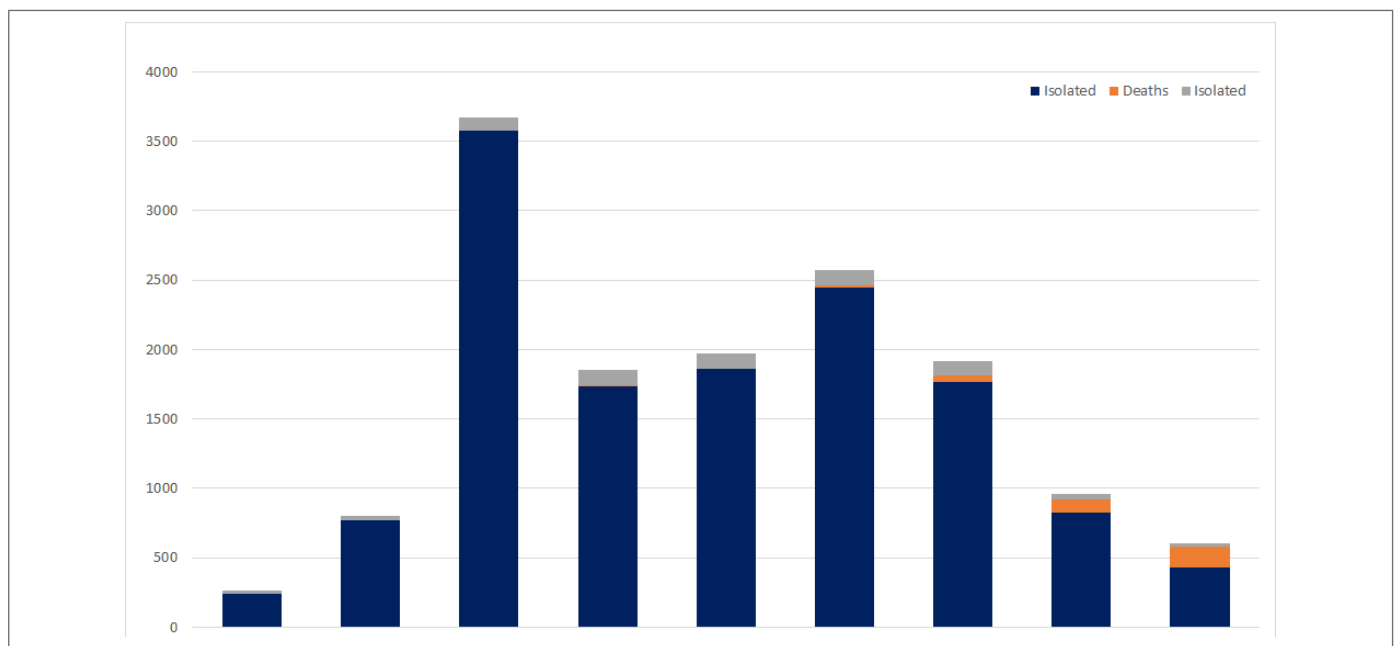


Figure 7. The distribution of case status by age group