

## I. National Notifiable Infectious Diseases

## 1. Reported cases, week ending January 9, 2021 (2nd Week)\*

Unit: no. of cases†

Classification of disease <sup>†</sup>	Current week	Cum. 2021	5-year weekly average	Total no. of cases by year					Imported cases of current week : Country (no. of cases)
				2020	2019	2018	2017	2016	
Category II									
Tuberculosis	436	799	508	20,150	23,821	26,433	28,161	30,892	
Varicella	249	522	1,854	31,239	82,868	96,467	80,092	54,060	
Measles	0	0	2	6	194	15	7	18	
Cholera	0	0	0	0	1	2	5	4	
Typhoid fever	2	4	3	71	94	213	128	121	
Paratyphoid fever	0	1	1	97	55	47	73	56	
Shigellosis	0	0	4	38	151	191	112	113	
EHEC	1	1	1	316	146	121	138	104	
Viral hepatitis A	32	78	65	3,516	17,598	2,437	4,419	4,679	
Pertussis	2	3	8	125	496	980	318	129	
Mumps	134	261	241	10,165	15,967	19,237	16,924	17,057	
Rubella	0	0	0	2	8	0	7	11	
Meningococcal disease	0	0	0	5	16	14	17	6	
Pneumococcal disease	1	3	15	341	526	670	523	441	
Hansen's disease	0	0	0	3	4				
Scarlet fever	14	25	241	2,345	7,562	15,777	22,838	11,911	
VRSA	0	0	-	9	3	0	0	-	
CRE	232	418	-	16,366	15,369	11,954	5,717	-	
Viral hepatitis E	2	4	-	182	-	-	-	-	
Category III									
Tetanus	0	1	6	31	31	31	34	24	
Viral hepatitis B	6	9	0	351	389	392	391	359	
Japanese encephalitis	0	0	178	6	34	17	9	28	
Viral hepatitis C	139	253	1	11,385	9,810	10,811	6,396	-	
Malaria	0	0	5	379	559	576	515	673	
Legionellosis	4	6	0	289	501	305	198	128	
<i>Vibrio vulnificus</i> sepsis	0	0	0	71	42	47	46	56	
Murine typhus	1	1	21	25	14	16	18	18	
Scrub typhus	12	30	1	4,280	4,005	6,668	10,528	11,105	
Leptospirosis	1	1	0	167	138	118	103	117	
Brucellosis	0	0	7	8	1	5	6	4	
HFRS	0	9	1	271	399	433	531	575	
HIV/AIDS	6	6	5	802	1,005	989	1,008	1,060	
CJD	2	4	2	75	53	53	36	42	
Dengue fever	0	0	0	42	273	159	171	313	
Q fever	0	0	0	72	162	163	96	81	
Lyme Borreliosis	0	0	0	7	23	23	31	27	
Melioidosis	0	0	0	1	8	2	2	4	
Chikungunya fever	0	0	0	1	16	3	5	10	
SFTS	0	0	0	243	223	259	272	165	
Zika virus infection	0	0	-	0	3	3	11	16	

Abbreviation: EHEC= Enterohemorrhagic *Escherichia coli*; VRSA= Vancomycin-resistant *Staphylococcus aureus*; CRE= Carbapenem-resistant Enterobacteriaceae; HFRS= Hemorrhagic fever with renal syndrome; CJD= Creutzfeldt-Jacob Disease; SFTS= Severe fever with thrombocytopenia syndrome.

Cum: Cumulative counts from 1st week to current week in a year.

\* The reported data for year 2020, 2021 are provisional but the data from 2016 to 2019 are finalized data.

† According to surveillance data, the reported cases may include all of the cases such as confirmed, suspected, and asymptomatic carrier in the group.

‡ The reported surveillance data excluded no incidence data such as Ebola virus disease, Marburg Hemorrhagic fever, Lassa fever, Crimean Congo Hemorrhagic fever, South American Hemorrhagic fever, Rift Valley fever, Smallpox, Plague, Anthrax, Botulism, Tularemia, Newly emerging infectious disease syndrome, Severe Acute Respiratory Syndrome, Middle East Respiratory Syndrome, Human infection with zoonotic influenza, Novel Influenza, Diphtheria, Poliomyelitis, *Haemophilus influenzae* type b, Epidemic typhus, Rabies, Yellow fever, West Nile fever and Tick-borne Encephalitis.

## 2. Reported cases by geography, week ending January 9, 2021 (2nd Week)\*

Unit: no. of cases†

Reporting area	Diseases of Category II											
	Tuberculosis			Varicella			Measles			Cholera		
	Current week	Cum. 2021	Cum. 5-year average§	Current week	Cum. 2021	Cum. 5-year average§	Current week	Cum. 2021	Cum. 5-year average§	Current week	Cum. 2021	Cum. 5-year average§
Overall	436	799	1,025	249	522	3,862	0	0	2	0	0	0
Seoul	78	138	187	32	55	417	0	0	1	0	0	0
Busan	27	45	71	13	28	178	0	0	0	0	0	0
Daegu	22	39	49	19	35	188	0	0	1	0	0	0
Incheon	31	55	50	15	25	201	0	0	0	0	0	0
Gwangju	16	20	25	13	30	176	0	0	0	0	0	0
Daejeon	10	17	23	7	13	104	0	0	0	0	0	0
Ulsan	3	8	22	0	4	78	0	0	0	0	0	0
Sejong	4	5	4	0	1	40	0	0	0	0	0	0
Gyeonggi	90	181	219	69	142	1,103	0	0	0	0	0	0
Gangwon	16	31	47	10	16	97	0	0	0	0	0	0
Chungbuk	14	26	31	4	15	106	0	0	0	0	0	0
Chungnam	20	38	43	7	19	161	0	0	0	0	0	0
Jeonbuk	18	31	42	8	17	149	0	0	0	0	0	0
Jeonnam	26	44	53	15	35	177	0	0	0	0	0	0
Gyeongbuk	29	60	73	17	45	210	0	0	0	0	0	0
Gyeongnam	29	51	73	12	23	375	0	0	0	0	0	0
Jeju	3	10	13	8	19	102	0	0	0	0	0	0

Cum: Cumulative counts from 1st week to current week in a year

\* The reported data for year 2020, 2021 are provisional but the data from 2016 to 2019 are finalized data.

† According to surveillance data, the reported cases may include all of the cases such as confirmed, suspected, and asymptomatic carrier in the group.

§ Cum. 5-year average is mean value calculated by cumulative counts from 1st week to current week for 5 preceding years.

## 2. (Continued) Reported cases by geography, week ending January 9, 2021 (2nd Week)\*

Unit: no. of cases†

Reporting area	Diseases of Category II											
	Typhoid fever			Paratyphoid fever			Shigellosis			Enterohemorrhagic <i>Escherichia coli</i>		
	Current week	Cum. 2021	Cum. 5-year average‡	Current week	Cum. 2021	Cum. 5-year average‡	Current week	Cum. 2021	Cum. 5-year average‡	Current week	Cum. 2021	Cum. 5-year average‡
Overall	2	4	4	0	1	0	0	0	10	1	1	0
Seoul	0	0	1	0	0	0	0	0	2	0	0	0
Busan	0	0	0	0	0	0	0	0	1	0	0	0
Daegu	0	0	0	0	0	0	0	0	1	0	0	0
Incheon	0	1	1	0	0	0	0	0	1	1	1	0
Gwangju	0	0	0	0	0	0	0	0	0	0	0	0
Daejeon	0	0	0	0	0	0	0	0	0	0	0	0
Ulsan	0	0	0	0	0	0	0	0	0	0	0	0
Sejong	0	0	0	0	0	0	0	0	0	0	0	0
Gyeonggi	0	0	2	0	1	0	0	0	2	0	0	0
Gangwon	0	0	0	0	0	0	0	0	0	0	0	0
Chungbuk	0	0	0	0	0	0	0	0	0	0	0	0
Chungnam	0	0	0	0	0	0	0	0	1	0	0	0
Jeonbuk	0	0	0	0	0	0	0	0	0	0	0	0
Jeonnam	1	1	0	0	0	0	0	0	1	0	0	0
Gyeongbuk	0	0	0	0	0	0	0	0	1	0	0	0
Gyeongnam	1	2	0	0	0	0	0	0	0	0	0	0
Jeju	0	0	0	0	0	0	0	0	0	0	0	0

Cum: Cumulative counts from 1st week to current week in a year

\* The reported data for year 2020, 2021 are provisional but the data from 2016 to 2019 are finalized data.

† According to surveillance data, the reported cases may include all of the cases such as confirmed, suspected, and asymptomatic carrier in the group.

‡ Cum. 5-year average is mean value calculated by cumulative counts from 1st week to current week for 5 preceding years.

## 2. (Continued) Reported cases by geography, week ending January 9, 2021 (2nd Week)\*

Unit: no. of cases†

Reporting area	Diseases of Category II											
	Viral hepatitis A			Pertussis			Mumps			Rubella		
	Current week	Cum. 2021	Cum. 5-year average§	Current week	Cum. 2021	Cum. 5-year average§	Current week	Cum. 2021	Cum. 5-year average§	Current week	Cum. 2021	Cum. 5-year average§
Overall	32	78	128	2	3	20	134	261	435	0	0	0
Seoul	7	12	22	0	0	3	11	20	44	0	0	0
Busan	0	1	2	0	0	1	3	10	25	0	0	0
Daegu	3	4	2	0	0	1	6	12	14	0	0	0
Incheon	7	10	9	0	0	2	10	15	19	0	0	0
Gwangju	1	2	1	0	0	1	7	16	24	0	0	0
Daejeon	0	3	8	1	1	1	4	8	11	0	0	0
Ulsan	0	0	1	0	0	0	0	2	15	0	0	0
Sejong	0	2	2	0	0	1	0	1	3	0	0	0
Gyeonggi	0	15	41	1	1	4	47	99	104	0	0	0
Gangwon	0	1	5	0	0	0	3	8	19	0	0	0
Chungbuk	1	3	5	0	0	1	2	6	12	0	0	0
Chungnam	5	10	10	0	0	1	10	15	22	0	0	0
Jeonbuk	2	4	9	0	0	1	1	1	21	0	0	0
Jeonnam	3	4	3	0	0	1	5	10	18	0	0	0
Gyeongbuk	1	3	4	0	0	1	5	8	22	0	0	0
Gyeongnam	1	1	3	0	1	1	16	23	56	0	0	0
Jeju	1	3	1	0	0	0	4	7	6	0	0	0

Cum: Cumulative counts from 1st week to current week in a year

\* The reported data for year 2020, 2021 are provisional but the data from 2016 to 2019 are finalized data.

† According to surveillance data, the reported cases may include all of the cases such as confirmed, suspected, and asymptomatic carrier in the group.

§ Cum. 5-year average is mean value calculated by cumulative counts from 1st week to current week for 5 preceding years.

## 2. (Continued) Reported cases by geography, week ending January 9, 2021 (2nd Week)\*

Unit: no. of cases†

Reporting area	Diseases of Category II						Diseases of Category III					
	Meningococcal disease			Scarlet fever			Tetanus			Viral hepatitis B		
	Current week	Cum. 2021	Cum. 5-year average§	Current week	Cum. 2021	Cum. 5-year average§	Current week	Cum. 2021	Cum. 5-year average§	Current week	Cum. 2021	Cum. 5-year average§
Overall	0	0	0	14	25	401	0	1	0	6	9	6
Seoul	0	0	0	0	4	53	0	0	0	2	2	2
Busan	0	0	0	1	2	30	0	0	0	0	0	1
Daegu	0	0	0	1	1	13	0	1	0	0	0	0
Incheon	0	0	0	0	1	19	0	0	0	0	0	0
Gwangju	0	0	0	5	5	24	0	0	0	0	0	0
Daejeon	0	0	0	2	3	15	0	0	0	0	1	0
Ulsan	0	0	0	0	0	15	0	0	0	0	0	0
Sejong	0	0	0	0	0	2	0	0	0	0	0	0
Gyeonggi	0	0	0	0	0	110	0	0	0	2	3	1
Gangwon	0	0	0	1	2	5	0	0	0	0	0	0
Chungbuk	0	0	0	0	1	8	0	0	0	0	0	0
Chungnam	0	0	0	1	1	21	0	0	0	0	0	0
Jeonbuk	0	0	0	0	0	15	0	0	0	0	0	1
Jeonnam	0	0	0	0	0	19	0	0	0	0	0	0
Gyeongbuk	0	0	0	1	2	19	0	0	0	1	2	0
Gyeongnam	0	0	0	1	2	27	0	0	0	0	0	1
Jeju	0	0	0	1	1	6	0	0	0	1	1	0

Cum: Cumulative counts from 1st week to current week in a year

\* The reported data for year 2020, 2021 are provisional but the data from 2016 to 2019 are finalized data.

† According to surveillance data, the reported cases may include all of the cases such as confirmed, suspected, and asymptomatic carrier in the group.

§ Cum. 5-year average is mean value calculated by cumulative counts from 1st week to current week for 5 preceding years.

## 2. (Continued) Reported cases by geography, week ending January 9, 2021 (2nd Week)\*

Unit: no. of cases<sup>†</sup>

Reporting area	Diseases of Category III											
	Japanese encephalitis			Malaria			Legionellosis			<i>Vibrio vulnificus</i> sepsis		
	Current week	Cum. 2021	Cum. 5-year average <sup>§</sup>	Current week	Cum. 2021	Cum. 5-year average <sup>§</sup>	Current week	Cum. 2021	Cum. 5-year average <sup>§</sup>	Current week	Cum. 2021	Cum. 5-year average <sup>§</sup>
Overall	0	0	0	0	0	3	4	6	8	0	0	0
Seoul	0	0	0	0	0	1	1	1	3	0	0	0
Busan	0	0	0	0	0	0	0	0	1	0	0	0
Daegu	0	0	0	0	0	0	0	0	1	0	0	0
Incheon	0	0	0	0	0	1	0	0	0	0	0	0
Gwangju	0	0	0	0	0	0	1	1	0	0	0	0
Daejeon	0	0	0	0	0	0	0	0	0	0	0	0
Ulsan	0	0	0	0	0	0	0	0	0	0	0	0
Sejong	0	0	0	0	0	0	0	0	0	0	0	0
Gyeonggi	0	0	0	0	0	1	0	1	3	0	0	0
Gangwon	0	0	0	0	0	0	0	0	0	0	0	0
Chungbuk	0	0	0	0	0	0	0	0	0	0	0	0
Chungnam	0	0	0	0	0	0	0	1	0	0	0	0
Jeonbuk	0	0	0	0	0	0	1	1	0	0	0	0
Jeonnam	0	0	0	0	0	0	1	1	0	0	0	0
Gyeongbuk	0	0	0	0	0	0	0	0	0	0	0	0
Gyeongnam	0	0	0	0	0	0	0	0	0	0	0	0
Jeju	0	0	0	0	0	0	0	0	0	0	0	0

Cum: Cumulative counts from 1st week to current week in a year

\* The reported data for year 2020, 2021 are provisional but the data from 2016 to 2019 are finalized data.

† According to surveillance data, the reported cases may include all of the cases such as confirmed, suspected, and asymptomatic carrier in the group.

§ Cum. 5-year average is mean value calculated by cumulative counts from 1st week to current week for 5 preceding years.

## 2. (Continued) Reported cases by geography, week ending January 9, 2021 (2nd Week)\*

Unit: no. of cases<sup>†</sup>

Reporting area	Diseases of Category III											
	Murine typhus			Scrub typhus			Leptospirosis			Brucellosis		
	Current week	Cum. 2021	Cum. 5-year average <sup>§</sup>	Current week	Cum. 2021	Cum. 5-year average <sup>§</sup>	Current week	Cum. 2021	Cum. 5-year average <sup>§</sup>	Current week	Cum. 2021	Cum. 5-year average <sup>§</sup>
Overall	1	1	0	12	30	36	1	1	1	0	0	0
Seoul	0	0	0	1	3	0	0	0	0	0	0	0
Busan	0	0	0	1	3	2	1	1	0	0	0	0
Daegu	0	0	0	1	1	0	0	0	0	0	0	0
Incheon	1	1	0	1	1	1	0	0	0	0	0	0
Gwangju	0	0	0	0	1	1	0	0	0	0	0	0
Daejeon	0	0	0	0	0	0	0	0	0	0	0	0
Ulsan	0	0	0	0	0	2	0	0	0	0	0	0
Sejong	0	0	0	0	0	0	0	0	0	0	0	0
Gyeonggi	0	0	0	0	0	2	0	0	1	0	0	0
Gangwon	0	0	0	0	0	0	0	0	0	0	0	0
Chungbuk	0	0	0	0	0	1	0	0	0	0	0	0
Chungnam	0	0	0	2	3	2	0	0	0	0	0	0
Jeonbuk	0	0	0	2	3	3	0	0	0	0	0	0
Jeonnam	0	0	0	4	9	8	0	0	0	0	0	0
Gyeongbuk	0	0	0	0	0	2	0	0	0	0	0	0
Gyeongnam	0	0	0	0	3	10	0	0	0	0	0	0
Jeju	0	0	0	0	3	2	0	0	0	0	0	0

Cum: Cumulative counts from 1st week to current week in a year

\* The reported data for year 2020, 2021 are provisional but the data from 2016 to 2019 are finalized data.

† According to surveillance data, the reported cases may include all of the cases such as confirmed, suspected, and asymptomatic carrier in the group.

§ Cum. 5-year average is mean value calculated by cumulative counts from 1st week to current week for 5 preceding years.

## 2. (Continued) Reported cases by geography, week ending January 9, 2021 (2nd Week)\*

Unit: no. of cases<sup>†</sup>

Reporting area	Diseases of Category III											
	Hemorrhagic fever with renal syndrome			Creutzfeldt-Jacob Disease			Dengue fever			Q fever		
	Current week	Cum. 2021	Cum. 5-year average <sup>§</sup>	Current week	Cum. 2021	Cum. 5-year average <sup>§</sup>	Current week	Cum. 2021	Cum. 5-year average <sup>§</sup>	Current week	Cum. 2021	Cum. 5-year average <sup>§</sup>
Overall	0	9	11	2	4	1	0	0	6	0	0	3
Seoul	0	0	1	0	0	1	0	0	2	0	0	0
Busan	0	0	0	1	1	0	0	0	1	0	0	0
Daegu	0	2	0	0	1	0	0	0	2	0	0	0
Incheon	0	1	0	1	2	0	0	0	0	0	0	0
Gwangju	0	0	0	0	0	0	0	0	0	0	0	0
Daejeon	0	0	0	0	0	0	0	0	0	0	0	0
Ulsan	0	0	0	0	0	0	0	0	0	0	0	0
Sejong	0	0	0	0	0	0	0	0	0	0	0	0
Gyeonggi	0	0	4	0	0	0	0	0	1	0	0	2
Gangwon	0	0	1	0	0	0	0	0	0	0	0	0
Chungbuk	0	0	0	0	0	0	0	0	0	0	0	1
Chungnam	0	2	1	0	0	0	0	0	0	0	0	0
Jeonbuk	0	3	1	0	0	0	0	0	0	0	0	0
Jeonnam	0	1	1	0	0	0	0	0	0	0	0	0
Gyeongbuk	0	0	2	0	0	0	0	0	0	0	0	0
Gyeongnam	0	0	0	0	0	0	0	0	0	0	0	0
Jeju	0	0	0	0	0	0	0	0	0	0	0	0

Cum: Cumulative counts from 1st week to current week in a year

\* The reported data for year 2020, 2021 are provisional but the data from 2016 to 2019 are finalized data.

† According to surveillance data, the reported cases may include all of the cases such as confirmed, suspected, and asymptomatic carrier in the group.

§ Cum. 5-year average is mean value calculated by cumulative counts from 1st week to current week for 5 preceding years.



## 2. (Continued) Reported cases by geography, week ending January 9, 2021 (2nd Week)\*

Unit: no. of cases<sup>†</sup>

Reporting area	Diseases of Category III								
	Lyme Borreliosis			Severe fever with thrombocytopenia syndrome			Zika virus infection		
	Current week	Cum. 2021	Cum. 5-year average <sup>§</sup>	Current week	Cum. 2021	Cum. 5-year average <sup>§</sup>	Current week	Cum. 2021	Cum. 5-year average <sup>§</sup>
Overall	0	0	0	0	0	0	0	0	-
Seoul	0	0	0	0	0	0	0	0	-
Busan	0	0	0	0	0	0	0	0	-
Daegu	0	0	0	0	0	0	0	0	-
Incheon	0	0	0	0	0	0	0	0	-
Gwangju	0	0	0	0	0	0	0	0	-
Daejeon	0	0	0	0	0	0	0	0	-
Ulsan	0	0	0	0	0	0	0	0	-
Sejong	0	0	0	0	0	0	0	0	-
Gyeonggi	0	0	0	0	0	0	0	0	-
Gangwon	0	0	0	0	0	0	0	0	-
Chungbuk	0	0	0	0	0	0	0	0	-
Chungnam	0	0	0	0	0	0	0	0	-
Jeonbuk	0	0	0	0	0	0	0	0	-
Jeonnam	0	0	0	0	0	0	0	0	-
Gyeongbuk	0	0	0	0	0	0	0	0	-
Gyeongnam	0	0	0	0	0	0	0	0	-
Jeju	0	0	0	0	0	0	0	0	-

Cum: Cumulative counts from 1st week to current week in a year

\* The reported data for year 2020, 2021 are provisional but the data from 2016 to 2019 are finalized data.

† According to surveillance data, the reported cases may include all of the cases such as confirmed, suspected, and asymptomatic carrier in the group.

§ Cum. 5-year average is mean value calculated by cumulative counts from 1st week to current week for 5 preceding years.

## II. Sentinel-Reporting Infectious Diseases

### 1. Influenza, weeks ending January 9, 2021 (2nd Week)

- Weekly proportion of influenza-like illness per 1,000 outpatients: 2.4 cases (=0.24%)
- Variation: no change from 2.4 cases in 1<sup>st</sup> week of 2021
- Sentinel reporting sites: 200 hospitals/clinics
- ※ 2020-2021 outbreak standard: 5.8 cases (/1,000)

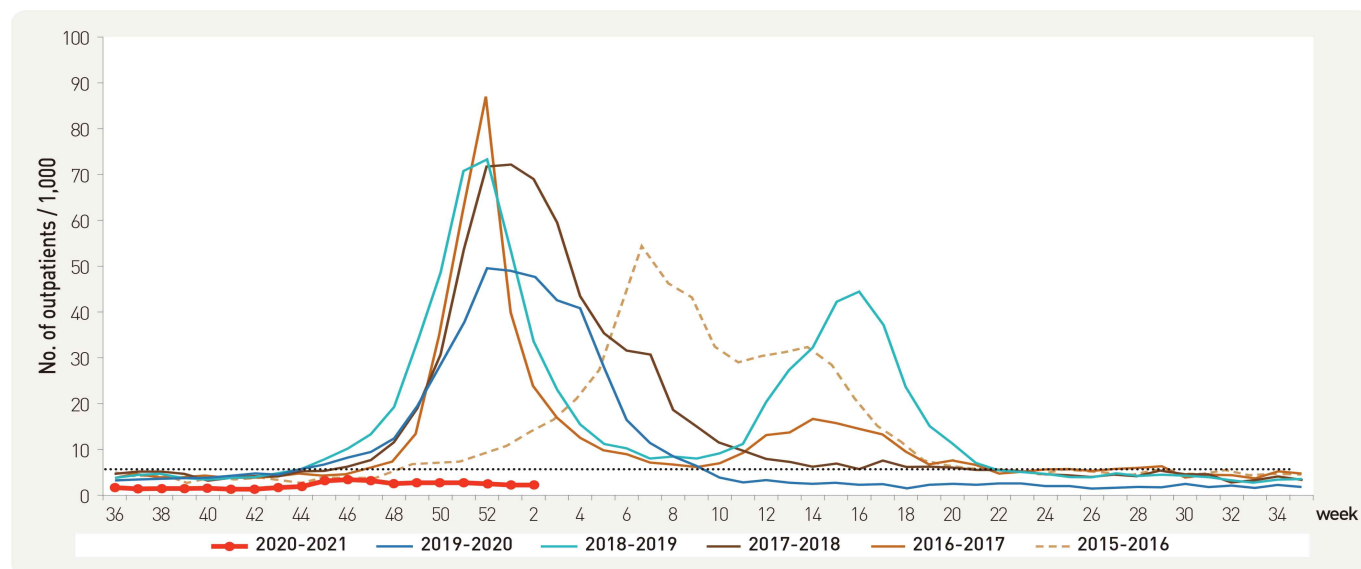


Figure 1. Weekly proportion of influenza-like illness per 1,000 outpatients, 2015-2016 to 2020-2021 flu seasons

### 2. Hand, Foot and Mouth Disease (HFMD), weeks ending January 9, 2021 (2nd Week)

- Weekly proportion of hand, foot and mouth disease (HFMD) per 1,000 outpatients: 0.5 case
- Variation: increase from 0.4 case in 1<sup>st</sup> week of 2021
- Sentinel reporting sites: 97 hospitals/clinics

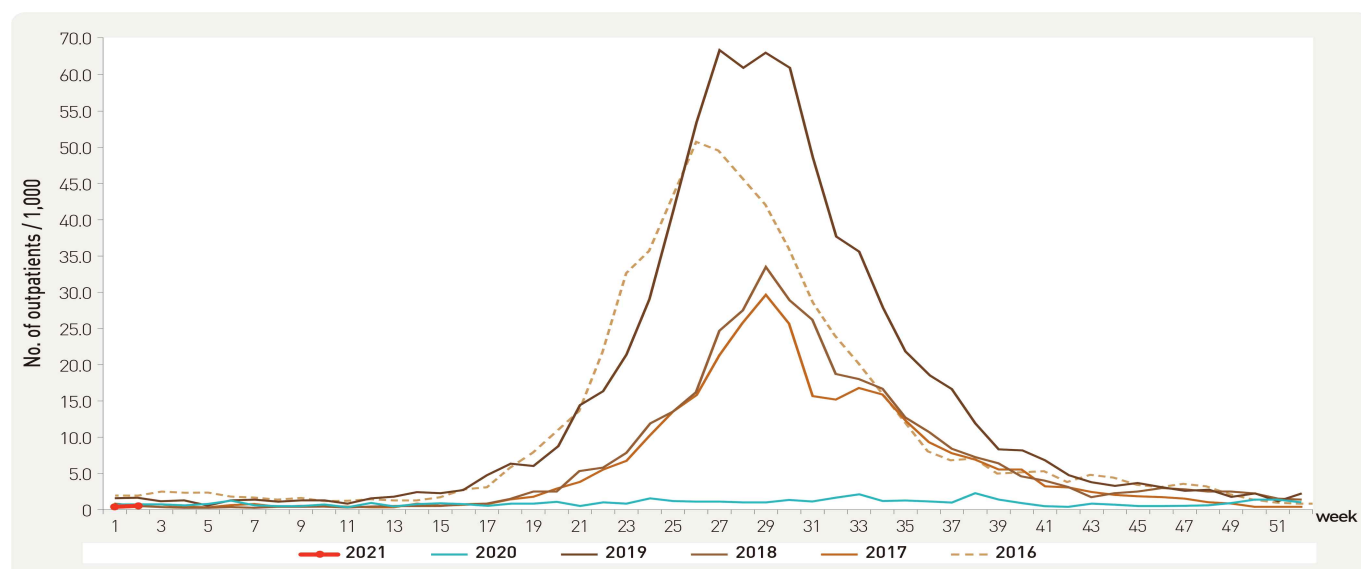


Figure 2. Weekly proportion of hand, foot and mouth per 1,000 outpatients, 2016-2021

### 3. Ophthalmologic infectious diseases, weeks ending January 9, 2021 (2nd Week)

- Weekly proportion of epidemic keratoconjunctivitis per 1,000 outpatients: 3.5 cases
- Variation: increase from 3.4 cases in 1<sup>st</sup> week of 2021
- Sentinel reporting sites: 90 hospitals/clinics

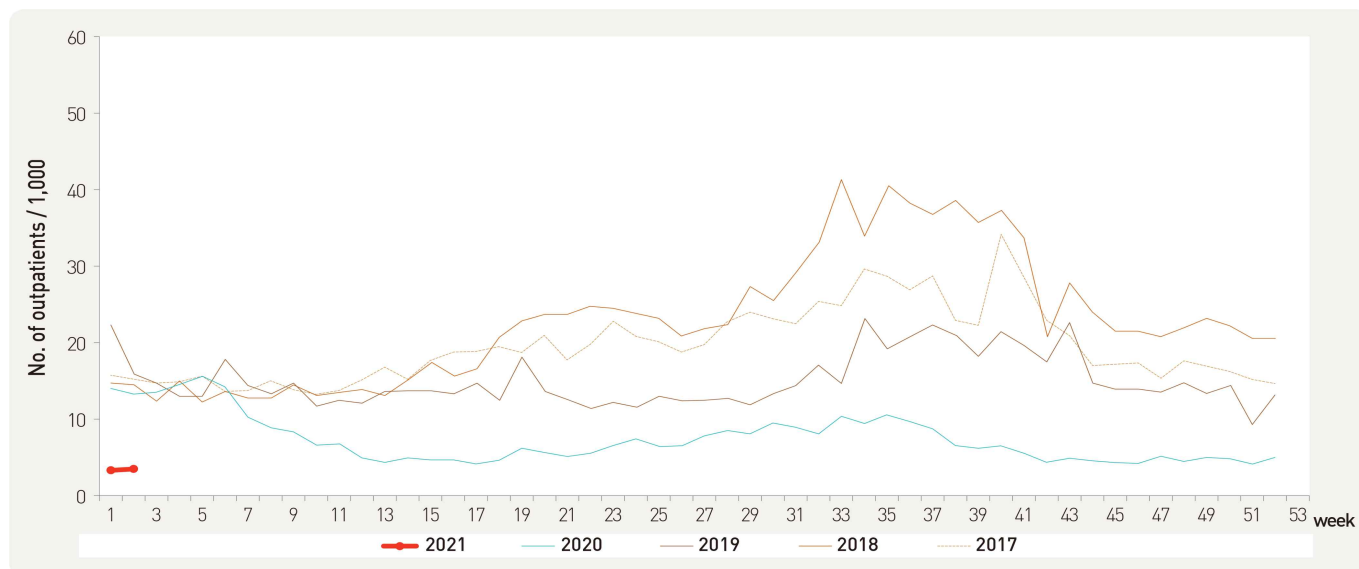


Figure 3. Weekly proportion of epidemic keratoconjunctivitis per 1,000 outpatients, 2017-2021

- Weekly proportion of acute hemorrhagic conjunctivitis per 1,000 outpatients: 0.2 case
- Variation: decrease from 0.3 case in 1<sup>st</sup> week of 2021
- Sentinel reporting sites: 90 hospitals/clinics

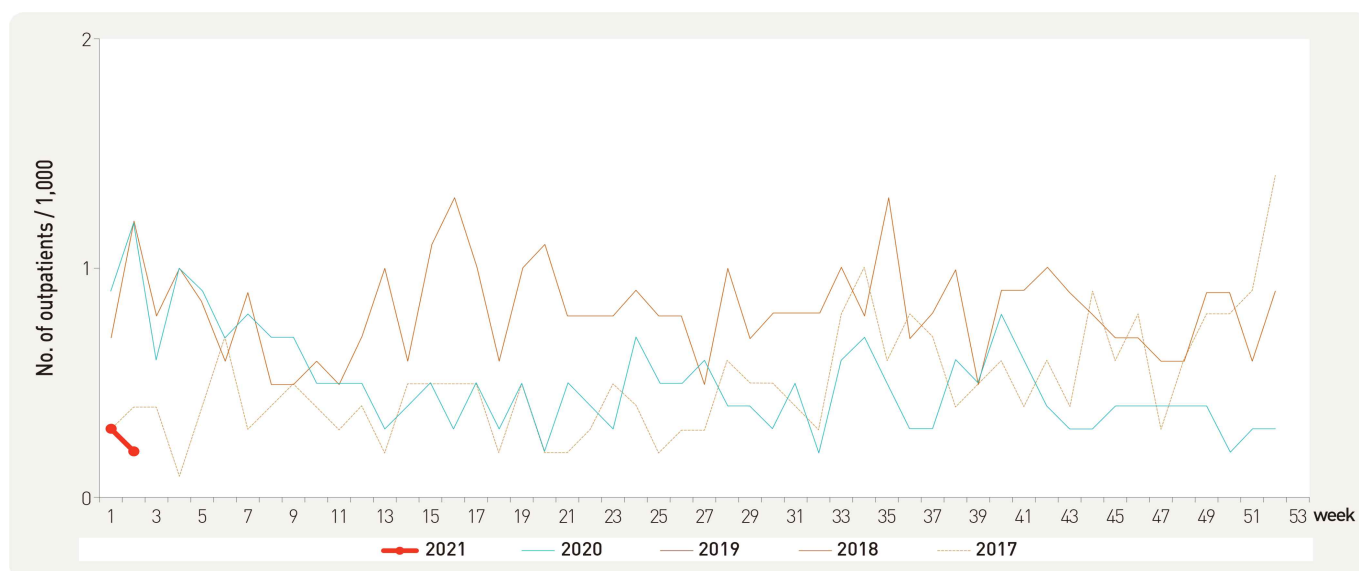


Figure 4. Weekly proportion of acute hemorrhagic conjunctivitis per 1,000 outpatients, 2017-2021

#### 4. Sexually Transmitted Diseases<sup>†</sup>, weeks ending January 9, 2021 (2nd Week)

- Cases per sentinel: 4.8 for human Papilloma virus infection, 2.6 for genital herpes, 1.9 for condyloma acuminata, 1.6 for chlamydia, 1.1 for gonorrhea, 1.0 for primary Syphilis, 0.0 for secondary Syphilis, 0.0 for congenital Syphilis
- Variation from 1<sup>st</sup> week of 2021  
 Increase: human Papilloma virus infection (1.6 → 4.8)  
 Decrease: gonorrhea (1.9 → 1.1), chlamydia (2.3 → 1.6), genital herpes (2.9 → 2.6), condyloma acuminata (2.1 → 1.9), secondary Syphilis (1.0 → 0.0)  
 No change: primary Syphilis (1.0 → 1.0), congenital Syphilis (0.0 → 0.0)
- Sentinel reporting sites: 592 hospitals/clinics  
 ※ No. of reported sites in 2<sup>nd</sup> week: 12 for gonorrhea, 33 for chlamydia, 30 for genital herpes, 20 for condyloma acuminata, 28 for human Papilloma virus infection, 1 for primary Syphilis, 0 for secondary Syphilis, 0 for congenital Syphilis

Unit: no. of cases/sentinels

Gonorrhea			Chlamydia			Genital herpes			Condyloma acuminata		
Current week	Cum. 2020	Cum. 5-year average <sup>§</sup>	Current week	Cum. 2020	Cum. 5-year average <sup>§</sup>	Current week	Cum. 2020	Cum. 5-year average <sup>§</sup>	Current week	Cum. 2020	Cum. 5-year average <sup>§</sup>
1.1	1.1	1.7	1.6	1.6	2.6	2.6	2.8	3.3	1.9	1.7	2.4

Human Papilloma virus infection			Primary Syphilis			Secondary Syphilis			Congenital Syphilis		
Current week	Cum. 2020	Cum. 5-year average <sup>§</sup>	Current week	Cum. 2020	Cum. 5-year average <sup>§</sup>	Current week	Cum. 2020	Cum. 5-year average <sup>§</sup>	Current week	Cum. 2020	Cum. 5-year average <sup>§</sup>
4.8	4.8	0.8	1.0	1.0	0.2	0.0	0.0	0.2	0.0	0.0	0.0

Cum: Cumulative counts from 1st week to current week in a year

<sup>†</sup> According to surveillance data, the reported cases may include all of the cases such as confirmed, suspected, and asymptomatic carrier in the group.

<sup>§</sup> Cum. 5-year average is mean value calculated by cumulative counts from 1st week to current week for 5 preceding years.

※ Added human Papilloma virus infection and syphilis from 1<sup>st</sup> week 2020.

### III. Waterborne and Foodborne Infectious Diseases

#### 1. Waterborne and foodborne disease outbreaks, weeks ending January 9, 2021 (2nd Week)

- No. of reported outbreaks: 3 with 47 patients (cumulative no. of outbreaks: 3 with 47 patients)
- Variation: increase from 0 in 1<sup>st</sup> week of 2021
- Reporting sites: 254 health centers

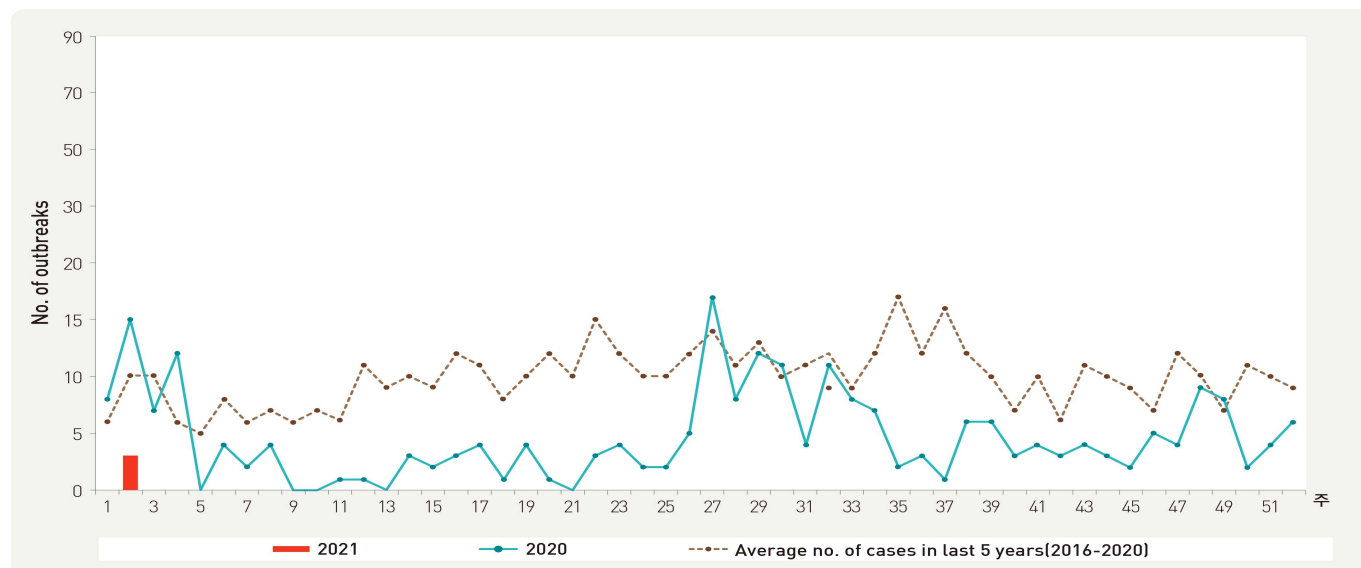


Figure 5. Number of waterborne and foodborne disease outbreaks reported by week, 2020-2021

## IV. Laboratory-based Pathogen Surveillance: Influenza and Respiratory Viruses

### 1. Influenza viruses, weeks ending January 9, 2021 (2nd Week)

- Weekly reported number of specimens positive for influenza: 0 case (0.0%) / 69 specimens [influenza subtype: A(H1N1)pdm09 0 case, A(H3N2) 0 case, B 0 case]
- Variation (%p): no change from 0 case (0.0%) / 84 specimens in 1<sup>st</sup> week of 2021
- Sentinel reporting sites: 52 hospitals/clinics

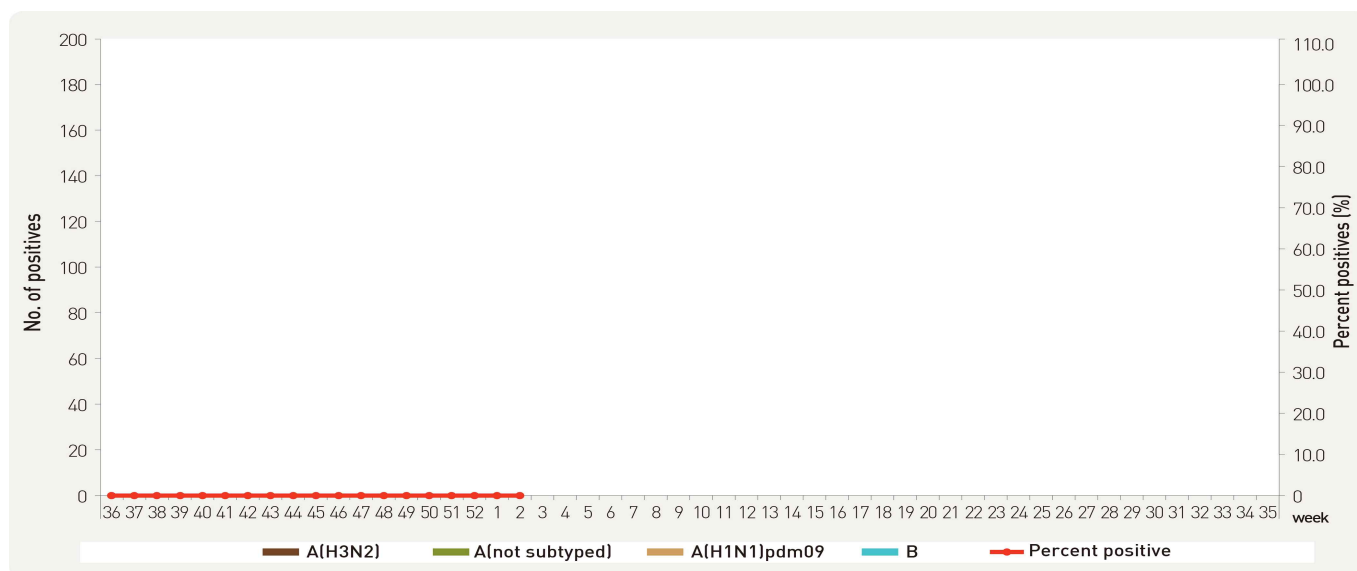


Figure 6. Number of specimens positive for influenza by subtype, 2020-2021 flu season

### 2. Respiratory viruses, weeks ending January 9, 2021 (2nd Week)

- Detection rate: 40.6% (cumulative mean proportion during preceding three weeks plus current week: 41.2% out of 318 specimens)
- Variation (%p): increase from 39.3% in 1<sup>st</sup> week of 2021
- Sentinel reporting sites: 17 city/provincial health and environmental institutes and 52 hospitals/clinics

2020/2021 (week)	Weekly total		Detection rate (%)							
	No. of samples	Detection rate (%)	HAdV	HPIV	HRSV	IFV	HCoV	HRV	HBoV	HMPV
51	100	45.0	10.0	0.0	0.0	0.0	0.0	17.0	18.0	0.0
52	65	38.5	13.8	0.0	0.0	0.0	0.0	13.8	10.8	0.0
1	84	39.3	8.3	0.0	0.0	0.0	0.0	15.5	15.5	0.0
2	69	40.6	11.6	0.0	0.0	0.0	0.0	13.0	15.9	0.0
Cum.*	318	41.2	10.7	0.0	0.0	0.0	0.0	15.1	15.4	0.0
2020 Cum.†	5,819	48.6	6.5	0.4	3.1	12.0	3.4	18.4	3.5	1.4

- HAdV: human Adenovirus, HPIV: human Parainfluenza virus, HRSV: human Respiratory syncytial virus, IFV: Influenza virus,

HCoV: human Coronavirus, HRV: human Rhinovirus, HBoV: human Bocavirus, HMPV: human Metapneumovirus

\* Cum. : the rate of detected cases between December 13, 2020 – January 9, 2021 (Average no. of detected cases is 80 last 4 weeks)

† 2020 Cum. : the rate of detected cases between December 29, 2019 – December 26, 2020

## V. Laboratory-based Pathogen Surveillance: Acute Gastroenteritis Viruses/Bacteria

### 1. Acute gastroenteritis-causing virus, weeks ending January 2, 2021 (1st Week)

- Detection rate: 44.4% [cumulative mean proportion in 2021: 16 cases (44.4%) out of 36 specimens]
- Variation (%p): decrease from 50.0.0% in 52<sup>nd</sup> week of 2020
- Sentinel reporting sites: 17 city/provincial health and environmental institutes and 70 hospitals/clinics

Week		No. of sample	No. of detection (Detection rate, %)											
			Norovirus		Group A Rotavirus		Enteric Adenovirus		Astrovirus		Sapovirus		Total	
2020	50	42	11	26.2	0	0.0	1	2.4	1	2.4	0	0.0	13	31.0
	51	52	25	48.1	2	3.8	0	0.0	0	0.0	0	0.0	27	51.9
	52	74	35	47.3	2	2.7	0	0.0	0	0.0	0	0.0	37	50.0
2021	1	36	15	41.7	1	2.8	0	0.0	0	0.0	0	0.0	16	44.4
Cum. 2021		36	15	41.7	1	2.8	0	0.0	0	0.0	0	0.0	16	44.4

\* The samples were collected from children ≤ 5 years of sporadic acute gastroenteritis in Korea.

### 2. Acute gastroenteritis-causing bacteria, weeks ending January 2, 2021 (1st Week)

- Detection rate: 11.0% [cumulative mean proportion in 2021: 12 cases (11.0%) out of 109 specimens]
- Variation (%p): increase from 8.0% in 52<sup>nd</sup> week of 2020
- Sentinel reporting sites: 17 city/provincial health and environmental institutes and 70 hospitals/clinics

Week		No. of Sample	No. of isolation (Isolation rate, %)									
			<i>Salmonella</i> spp.	Pathogenic <i>E.coli</i>	<i>Shigella</i> spp.	<i>V.parahaemolyticus</i>	<i>V. cholerae</i>	<i>Campylobacter</i> spp.	<i>C.perfringens</i>	<i>S. aureus</i>	<i>B. cereus</i>	Total
2020	50	154	3 (1.9)	7 (4.5)	0 (0.0)	0 (0.0)	0 (0.0)	1 (0.6)	8 (5.2)	4 (2.6)	2 (1.3)	26 (16.9)
	51	169	3 (1.8)	1 (0.6)	0 (0.0)	0 (0.0)	0 (0.0)	2 (1.2)	6 (3.6)	11 (6.5)	1 (0.6)	24 (14.2)
	52	176	3 (1.7)	1 (0.6)	0 (0.0)	0 (0.0)	0 (0.0)	4 (2.3)	0 (0.0)	4 (2.3)	2 (1.1)	14 (8.0)
2021	1	109	0 (0.0)	3 (2.8)	0 (0.0)	0 (0.0)	0 (0.0)	1 (0.9)	3 (2.8)	4 (3.7)	0 (0.0)	12 (11.0)
Cum. 2021		109	0 (0.0)	3 (2.8)	0 (0.0)	0 (0.0)	0 (0.0)	1 (0.9)	3 (2.8)	4 (3.7)	0 (0.0)	12 (11.0)

\* Bacterial Pathogens: *Salmonella* spp., *E. coli* (EHEC, ETEC, EPEC, EIEC), *Shigella* spp., *Vibrio parahaemolyticus*, *Vibrio cholerae*, *Campylobacter* spp., *Clostridium perfringens*, *Staphylococcus aureus*, *Bacillus cereus*, *Listeria monocytogenes*, *Yersinia enterocolitica*.

\* Hospitals participating in Laboratory surveillance in 2021 (69 hospitals)

## VI. Laboratory-based Pathogen Surveillance: Enterovirus

### 1. Enterovirus, weeks ending January 2, 2021 (1st Week)

- Detection rate: 0.0% (0 case / 1 specimen) [cumulative mean proportion in 2021: 0.0% (0 case / 1 specimen)]
  - Aseptic meningitis: 0 case (Cum. 2021: 0 case)
  - HFMD and herpangina: 0 case (Cum. 2021: 0 case)
  - HFMD with complications: 0 case (Cum. 2021: 0 case)
  - Other: 0 case (Cum. 2021: 0 case)
- Variation (%p): no change from 0.0% in 52<sup>nd</sup> week of 2020
- Sentinel reporting sites: 14 city/provincial health and environmental institutes and 60 hospitals/clinics

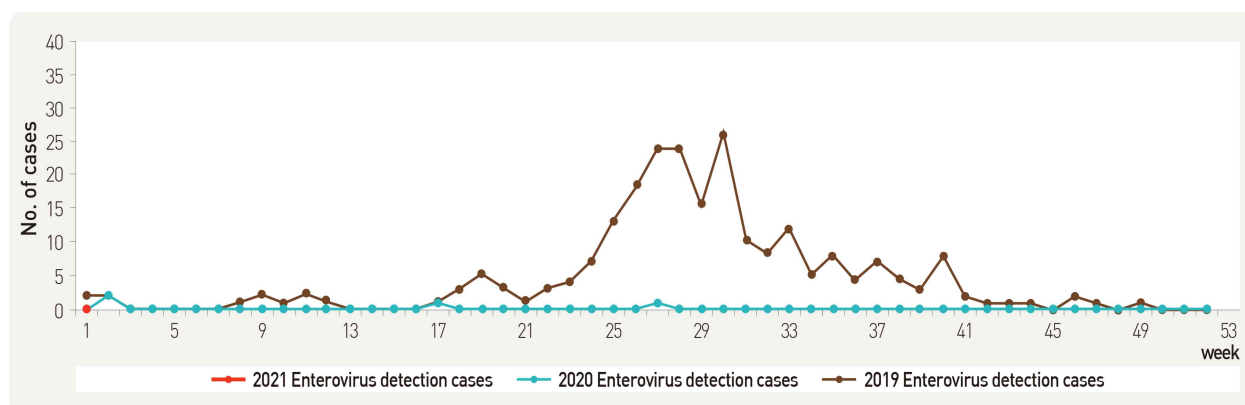


Figure 7. Detection of enterovirus in aseptic meningitis patients from 2019 to 2020

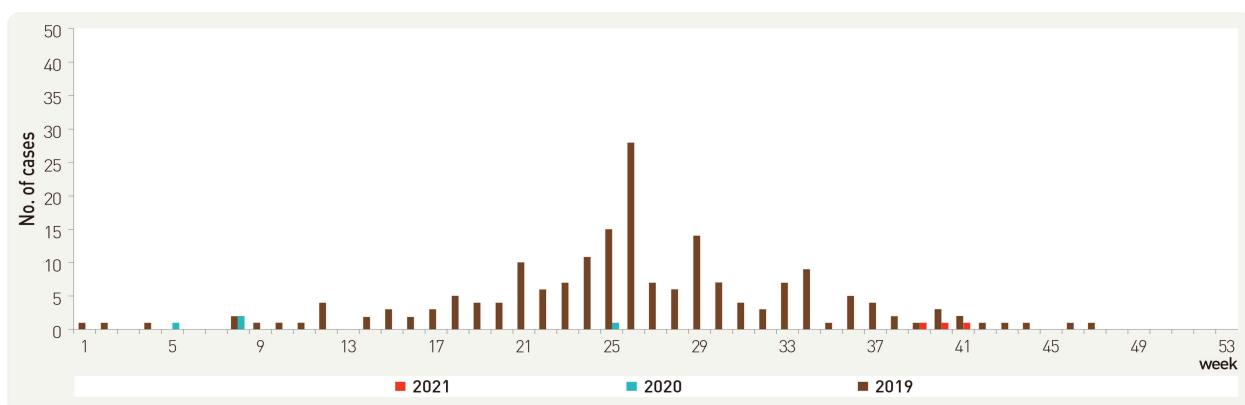


Figure 8. Detection of enterovirus in HFMD and herpangina patients from 2019 to 2020

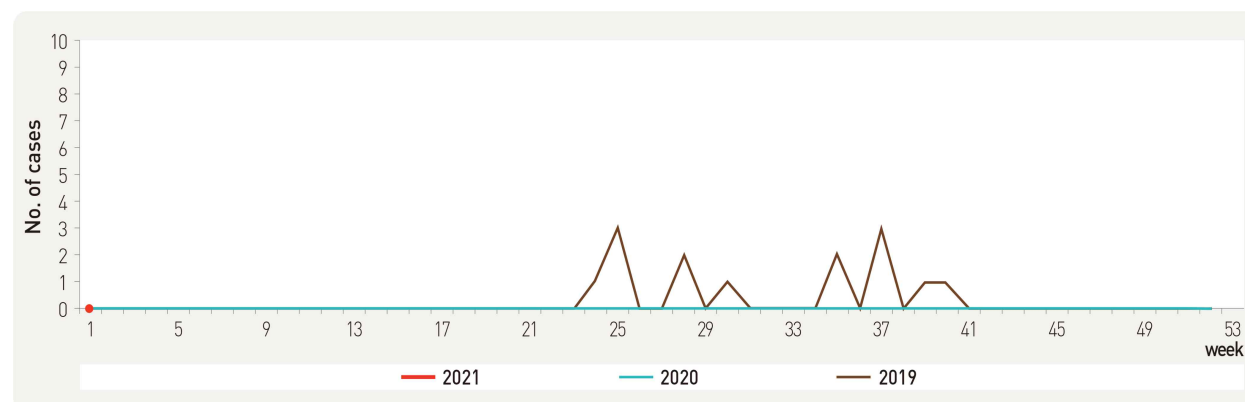


Figure 9. Detection of enterovirus in HFMD with complications patients from 2019 to 2020

## About PHWR Disease Surveillance Statistics

The Public Health Weekly Report (PHWR) Disease Surveillance Statistics is prepared by the Korea Disease Control and Prevention Agency (KCDA). These provisional surveillance data on the reported occurrence of national notifiable diseases and conditions are compiled through population-based or sentinel-based surveillance systems and published weekly, except for data on infrequent or recently-designated diseases. These surveillance statistics are informative for analyzing infectious disease or condition numbers and trends. However, the completeness of data might be influenced by some factors such as a date of symptom or disease onset, diagnosis, laboratory result, reporting of a case to a jurisdiction, or notification to Korea Disease Control and Prevention Agency. The official and final disease statistics are published in infectious disease surveillance yearbook annually.

## Using and Interpreting These Data in Tables

- **Current Week** – The number of cases under current week denotes cases who have been reported to Korea CDC at the central level via corresponding jurisdictions(health centers, and health departments) during that week and accepted/approved by surveillance staff.
- **Cum. 2021** – For the current year, it denotes the cumulative(Cum) year-to-date provisional counts for the specified condition.
- **5-year weekly average** – The 5-year weekly average is calculated by summing, for the 5 proceeding years, the provisional incidence counts for the current week, the two weeks preceding the current week, and the two weeks following the current week. The total sum of cases is then divided by 5 weeks. It gives help to discern the statistical aberration of the specified disease incidence by comparing difference between counts under current week and 5-year weekly average.

For example,

		Week Number				
		10	11	12	13	14
Year	2021			Current week		
	2020	X1	X2	X3	X4	X5
	2019	X6	X7	X8	X9	X10
	2018	X11	X12	X13	X14	X15
	2017	X16	X17	X18	X19	X20
	2016	X21	X22	X23	X24	X25

**5-year weekly average for current week**

$$= (X1 + X2 + \dots + X25) / 5$$

- **Cum. 5-year average** – Mean value calculated by cumulative counts from 1<sup>st</sup> week to current week for 5 preceding years. It gives help to understand the increasing or decreasing pattern of the specific disease incidence by comparing difference between cum. 2021 and cum. 5-year average.

## Contact Us

Questions or comments about the PHWR Disease Surveillance Statistics can be sent to [phwrcdc@korea.kr](mailto:phwrcdc@korea.kr) or to the following:

### Mail:

Division of Climate Change and Health Protection  
Korea Disease Control and Prevention Agency

187 Osongsaengmyeong 2-ro, Osong-eup, Heungdeok-gu, Cheongju-si, Chungcheongbuk-do, Korea, 28160