

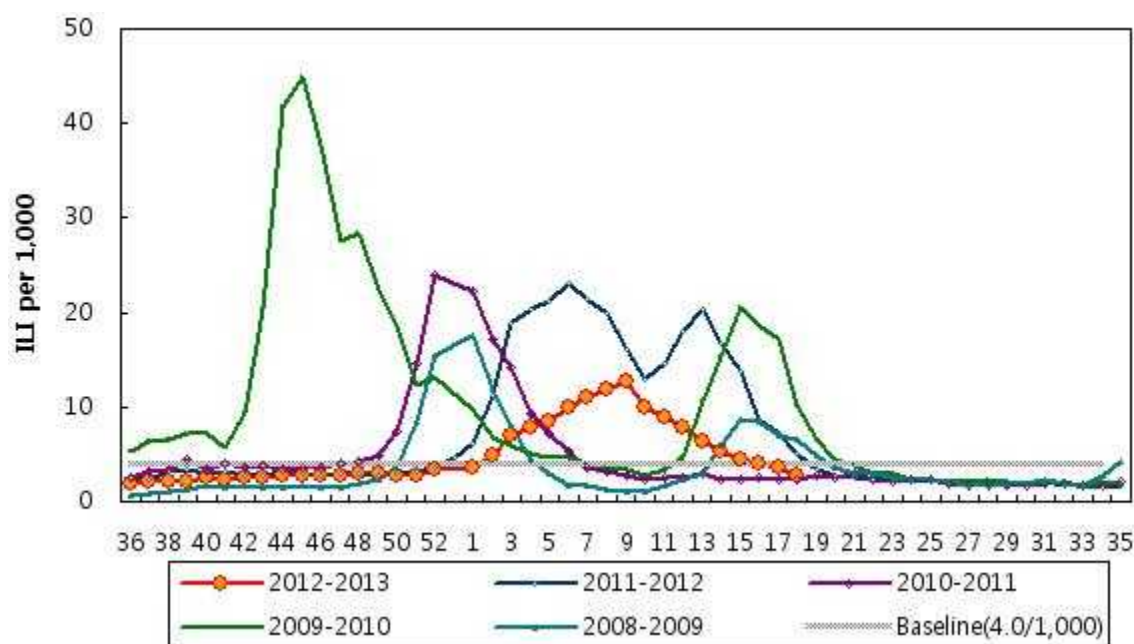
Influenza Weekly Report

Week 18 2013 – April 28, 2013 ~ May 4, 2013¹

Korean Influenza Surveillance Scheme, Korea Center for Disease Control and Prevention

Weekly Influenza like Illness Proportion

The overall proportion of patients, who visited sentinel physicians for influenza-like illness (ILI) was 2.8‰ for week 18. This permillage is below the national baseline of 4.0‰.



¹This information had been collected by May9, 2013

Weekly Report of Influenza Virus Isolation, 2012–2013

1,659 influenza viruses were isolated until the 18th week in 2012-2013 season.

1,266 viruses were identified as A/H3N2, 327 viruses were identified as

A/H1N1pdm09 and 66 viruses were identified as B.

